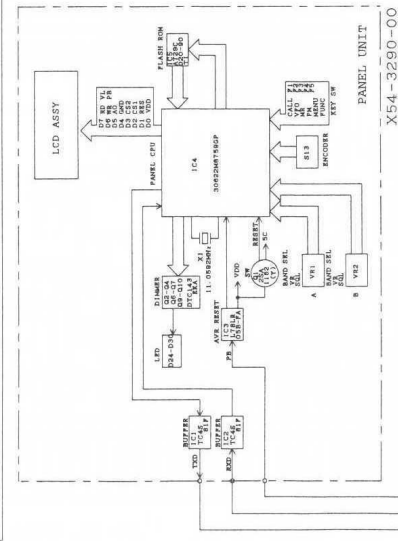
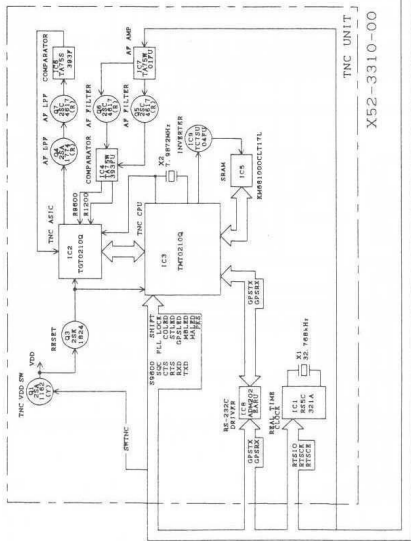
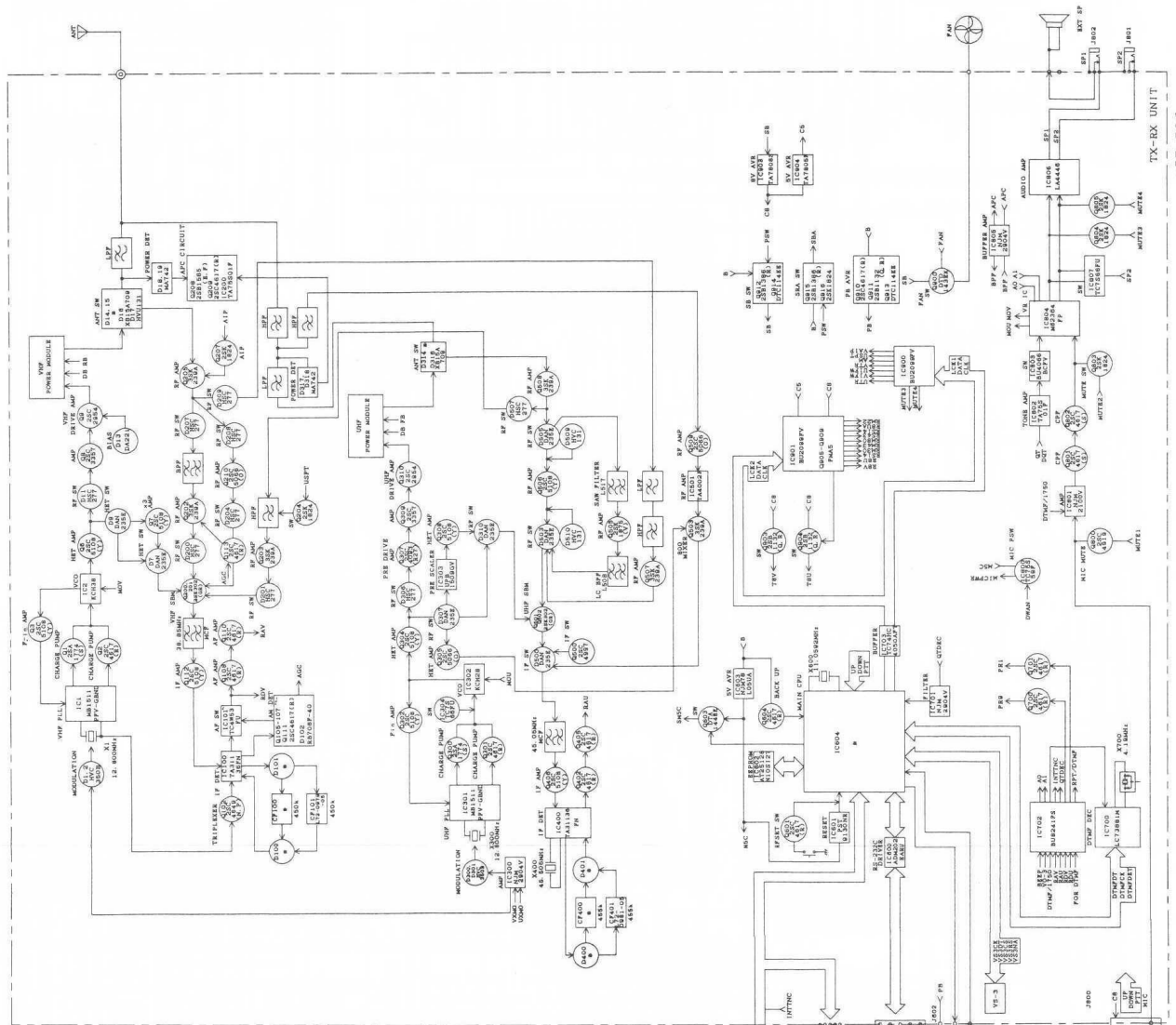


TM-D700AE

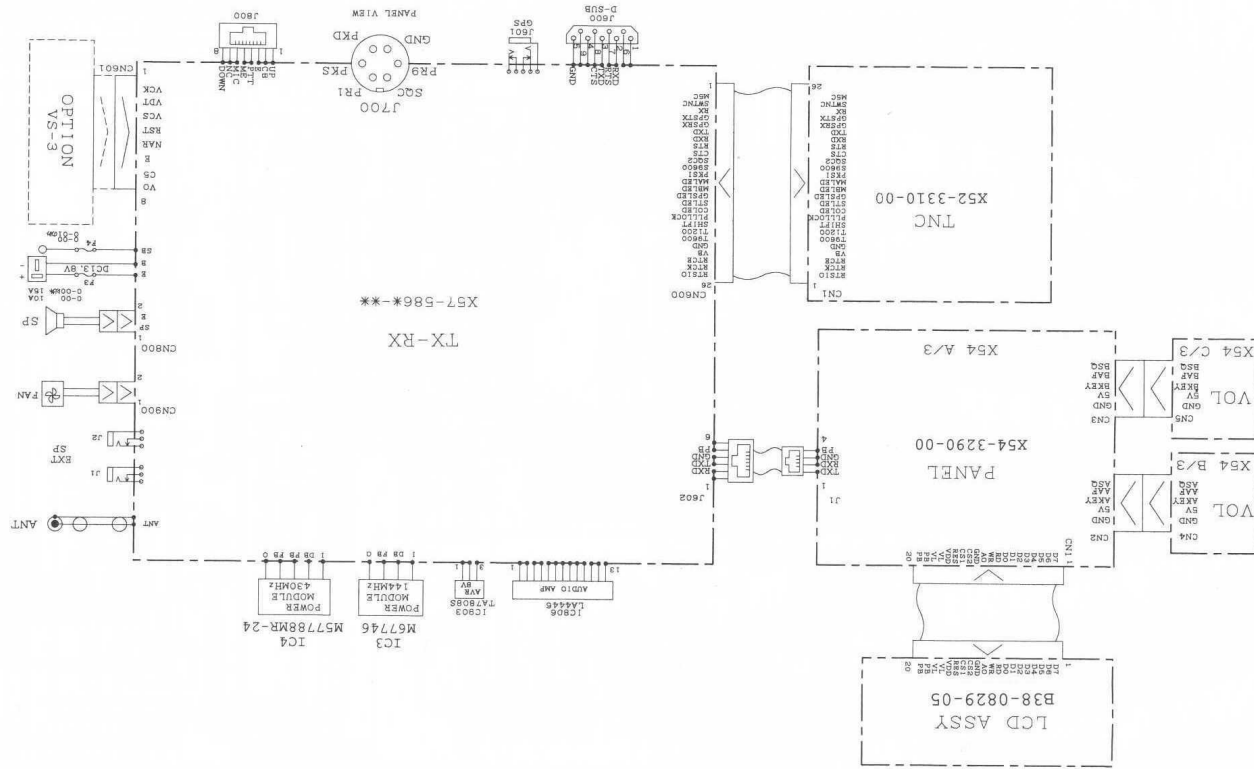
BLOCK DIAGRAM



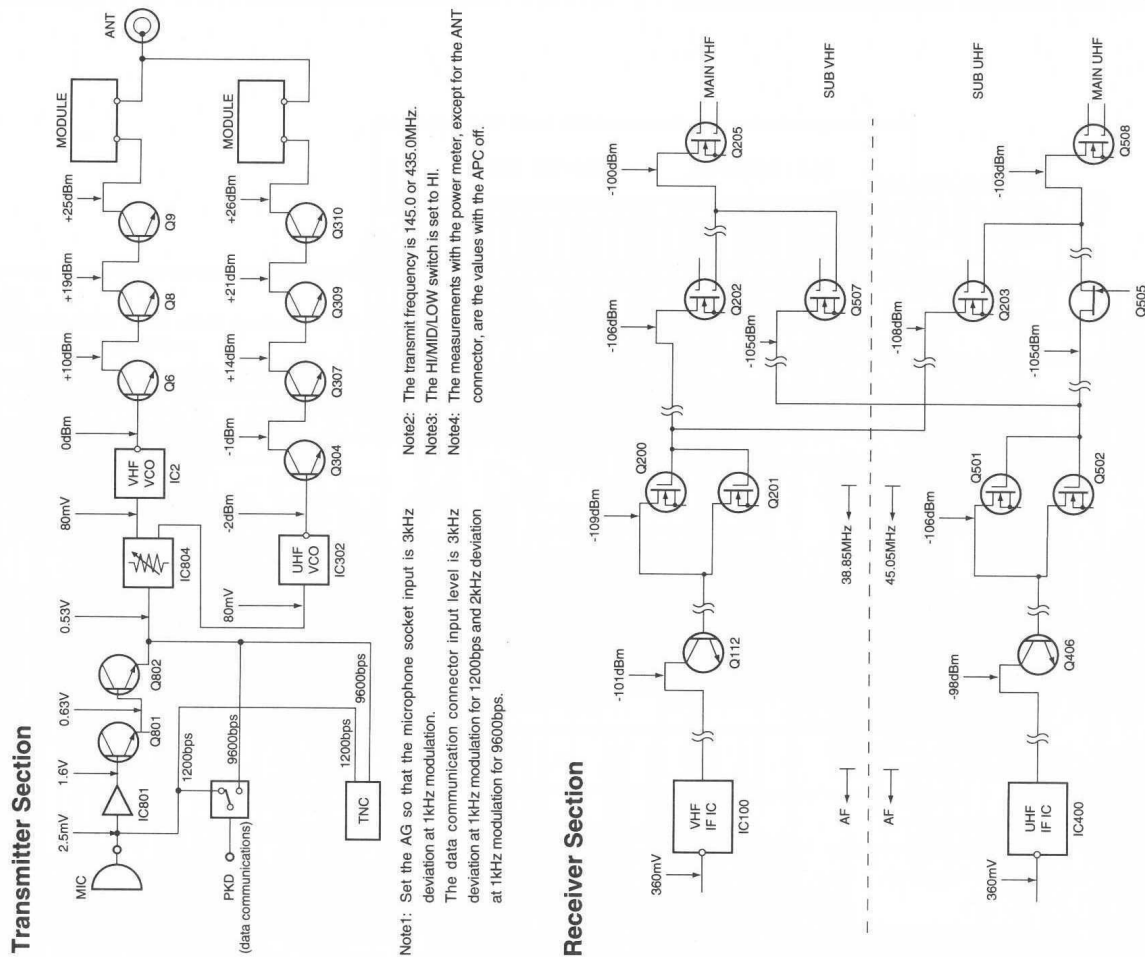
		TX-RX UNIT			
D100	D101	D400	D401	IC604	CF400
K	-	-	-	78F42180CVVC	-
M	-	-	-	78F42180CVVC	-
E	DAN235E	DAN235E	DAN235E	78F42180CVVC	U72-0971-05 U72-0980-05

X57-58CX-XX

WIRING DIAGRAM

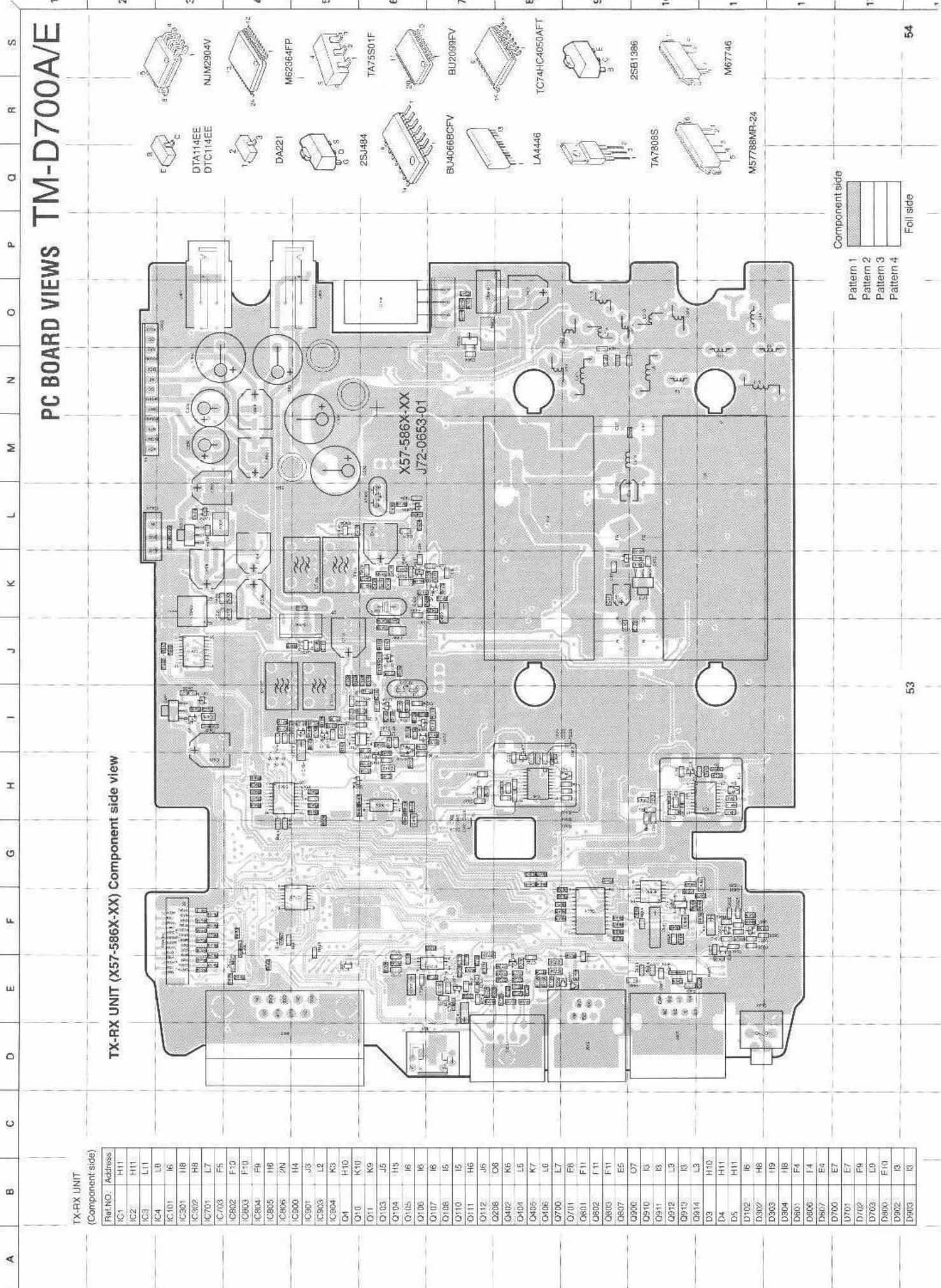


LEVEL DIAGRAM



Note1: The 12dB SINAD levels were plotted using a standard signal generator through a 0.01µF ceramic capacitor at each point from the RF to the first IF.

Note2: The AF levels were measured with an AF voltmeter when the -73dBm (50µV) standard signal generator signal modulated by a 1kHz modulation frequency and a 3kHz deviation was received and the AF output was adjusted to 0.63V/8Ω by the AF VR.

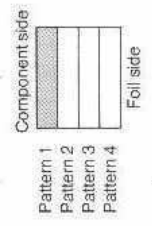
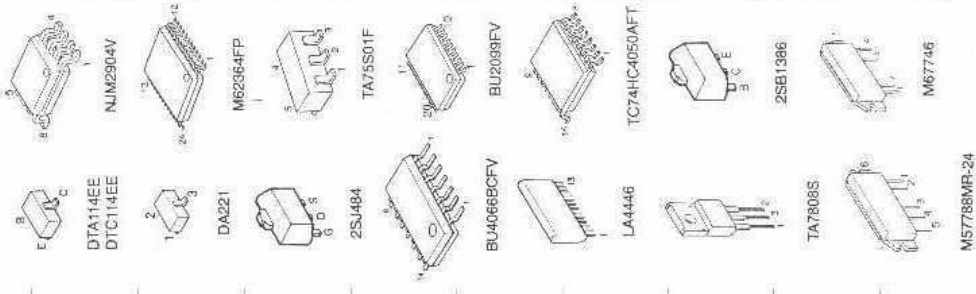


PC BOARD VIEWS **TM-D700A/E**

TX-RX UNIT (X57-586X-XX) Component side view

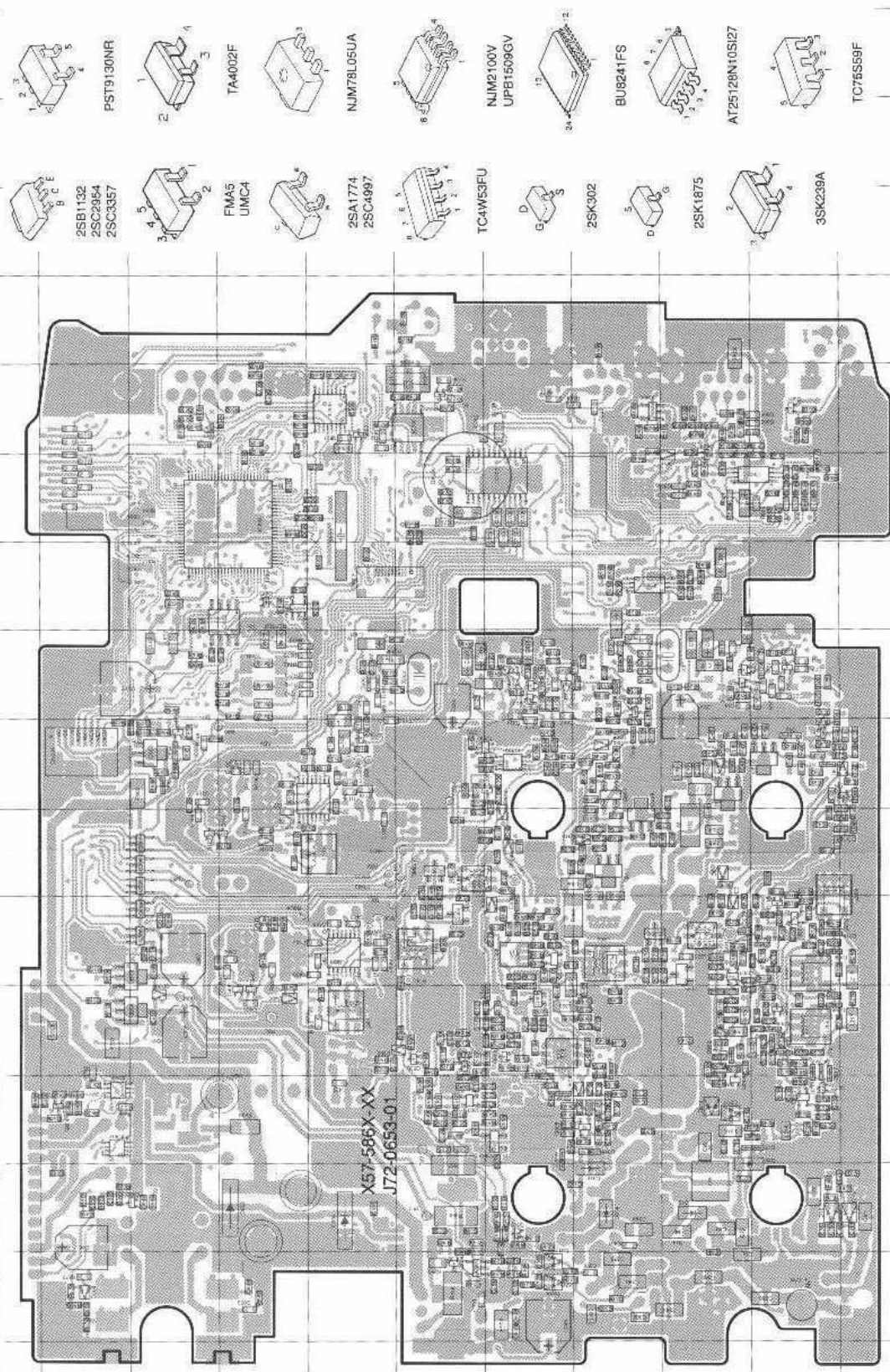
TX-RX UNIT
(Component side)

Ref: NO.	Address
IC1	H11
IC2	H11
IC3	L11
IC4	L8
IC101	I6
IC301	I8
IC302	H8
IC701	L7
IC703	F5
IC802	F-3
IC903	F-10
IC904	F8
IC905	I8
IC906	2N
IC900	I4
IC901	J3
IC903	L2
D4	H-10
O10	K-10
O11	K9
O103	J5
O104	H5
O105	I6
O106	I6
O107	I6
D108	I5
O110	I5
O111	H6
O112	J6
O208	O8
O402	K6
O404	L5
O405	K7
O406	L6
O700	L7
O701	F8
O801	F11
O802	F11
O803	F11
O807	E5
O900	O7
O910	I3
O911	I3
O912	L3
O913	I3
O814	L3
D3	H-10
D4	H11
D5	H11
D102	I6
D302	H8
D303	I9
D304	I8
D801	F4
D806	F4
D807	E4
D700	E7
D701	E7
D702	F9
D703	L9
D800	F10
D902	I3
D903	I3



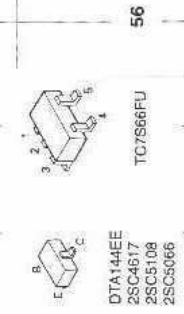
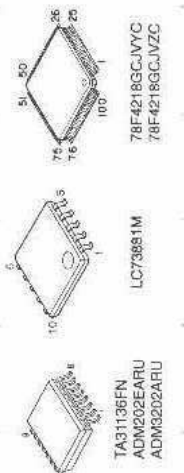
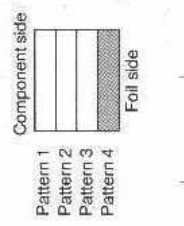
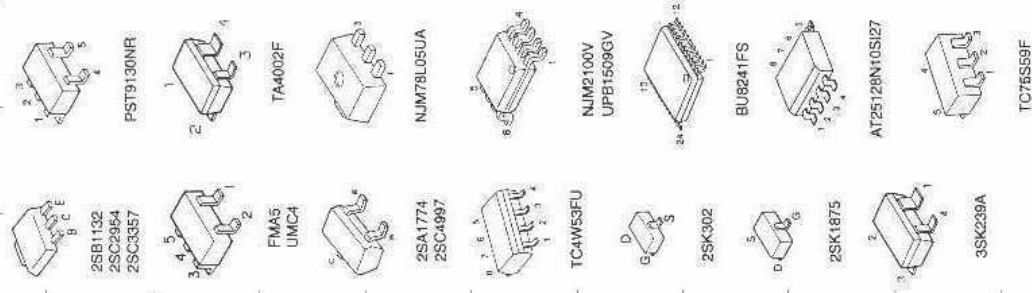
TM-D700A/E PC BOARD VIEWS

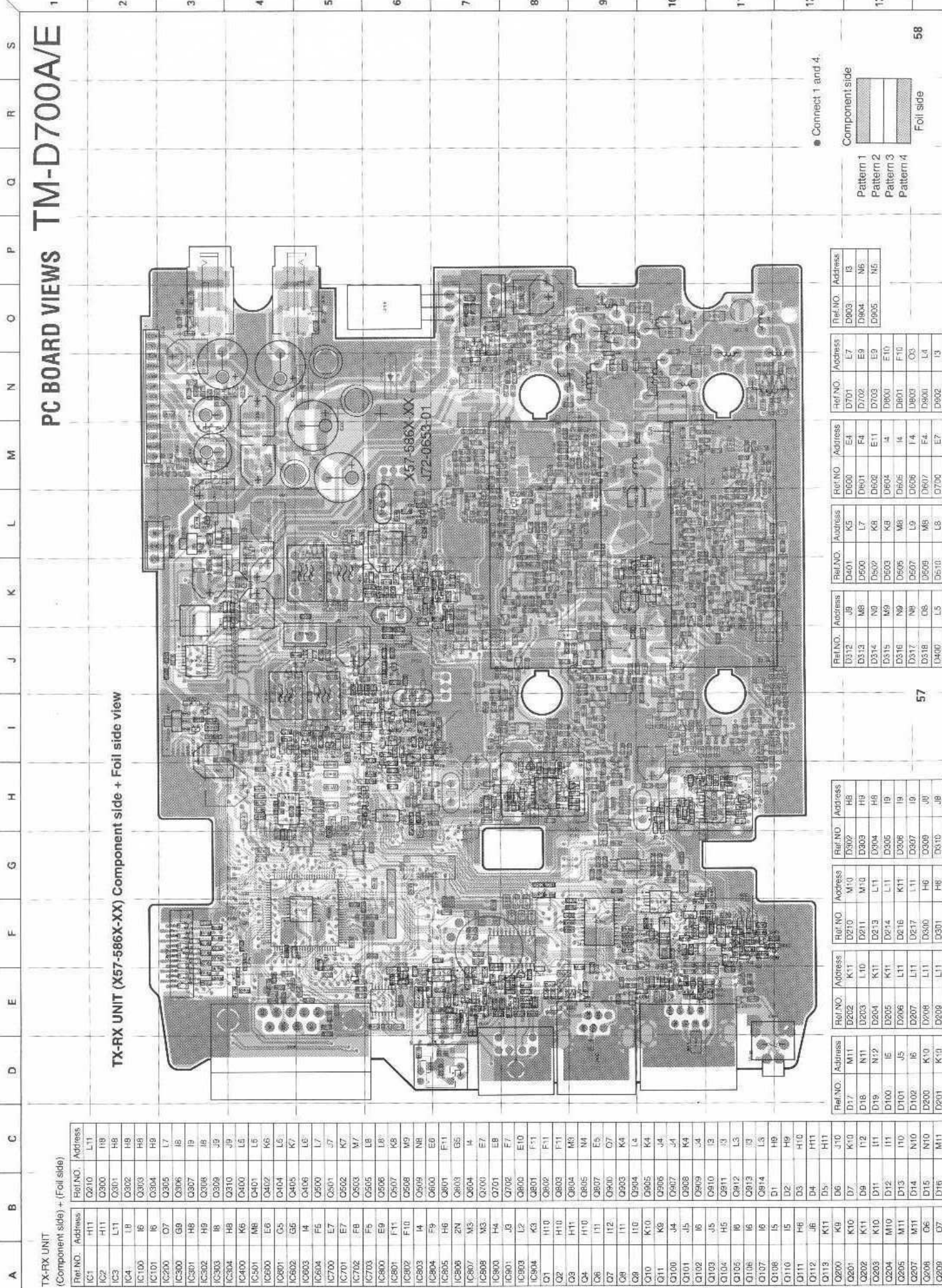
TX-RX UNIT (X57-586X-XX) Foil side view



Ref. No.	Address	Ref. No.	Address
IC100	K6	Q803	M5
IC200	E7	Q804	K4
IC300	M9	Q702	O7
IC303	K8	Q800	N10
IC304	L8	Q804	G3
IC400	I6	Q805	F4
IC501	G8	Q803	I4
IC600	O6	Q804	H4
IC601	M5	Q905	I4
IC602	M5	Q906	J4
IC603	K4	Q907	J4
IC604	R5	Q908	I4
IC700	O7	Q908	J4
IC702	N8	D1	L9
IC800	O8	D2	L9
IC901	N11	D6	J10
IC907	G3	D7	I10
IC908	G3	D9	K12
O1	L10	D11	K11
O3	L11	D12	K11
O8	K11	D13	K10
O7	K12	D14	F10
O8	K11	D15	F10
O9	K10	D16	F11
O100	J4	D17	G11
O101	J5	D18	F11
O102	K6	D19	F12
O113	I11	D100	K5
O200	I9	D101	J5
O201	I10	D201	I11
O202	I11	D201	I11
O203	I10	D202	I11
O204	G10	D203	H10
O205	G11	D204	I11
O207	G11	D275	I11
O209	E7	D206	H11
O210	H11	D207	H11
O300	L8	D208	H11
O301	L8	D209	H11
O302	L8	D210	G10
O304	L9	D211	G10
O305	H7	D213	G11
O306	K7	D214	G11
O307	K9	D215	I11
O308	K8	D217	G11
O309	J9	D300	L6
O400	H5	Q301	L6
O401	H5	Q305	K9
O400	H7	Q306	K9
Q501	J7	Q307	K9
Q502	I7	Q307	K9
Q503	G7	Q309	J8
Q505	H8	D310	J8
Q506	H8	D312	J9
Q507	I8	D313	G8
Q508	F8	D314	F9
Q509	O6	D315	G9
Q600	O6	D505	G9
Q601	O11	D507	H9
Q602	O11	D507	E8
Q603	O11	D317	G8
Q604	O11	D318	F8
Q605	O11	D400	H4
Q606	O11	D401	F6
Q607	O11	D500	O4
Q608	O11	D500	F5

Ref. No.	Address	Ref. No.	Address
D600	I17	D602	O11
D602	I8	D604	K4
D603	I8	D605	K4
D605	G9	D801	N10
D607	H8	D803	E3
D609	G8	D900	H4
D610	H8	D904	F6
D600	O4	D905	F5





PC BOARD VIEWS TM-D700A/E

TX-RX UNIT (X57-586X-XX) Component side + Foil side view

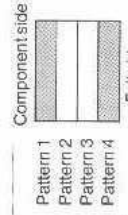
TX-RX UNIT
(Component side) + (Foil side)

Ref.NO.	Address	Ref.NO.	Address
IC1	H11	Q210	L11
IC2	H11	Q300	H8
IC3	L11	Q301	H8
IC4	L11	Q302	H8
IC100	I6	Q303	H8
IC101	I6	Q304	H8
IC200	O7	Q305	L7
IC300	G9	Q306	I8
IC301	H8	Q307	I9
IC302	H9	Q308	I8
IC303	H8	Q309	J9
IC304	H8	Q310	J9
IC400	K6	Q400	L5
IC501	M8	Q401	L6
IC600	L6	Q402	K6
IC801	O5	Q404	L5
IC802	G5	Q405	K7
IC803	I4	Q406	L6
IC804	F5	Q500	L7
IC700	E7	Q501	J7
IC701	E7	Q502	K7
IC702	F8	Q503	M7
IC703	F5	Q505	L8
IC800	E9	Q508	L8
IC801	F11	Q507	K8
IC802	F10	Q508	M9
IC803	I4	Q509	N8
IC804	F9	Q600	E9
IC805	H6	Q801	F11
IC806	ZN	Q803	G5
IC807	M3	Q804	I4
IC808	M3	Q700	E7
IC800	H4	Q701	E8
IC801	J9	Q702	F7
IC803	L2	Q800	E10
IC804	K3	Q801	F11
Q1	H10	Q802	F11
Q2	H10	Q803	F11
Q3	H11	Q804	M8
Q4	H10	Q805	N8
Q6	I31	Q807	E5
Q7	I2	Q800	O7
Q8	I11	Q903	K4
Q8	I10	Q904	L4
Q10	K10	Q905	K4
Q11	K8	Q906	J4
Q100	J4	Q907	J4
Q101	J5	Q908	K4
Q102	I6	Q909	J4
Q103	J5	Q910	I3
Q104	H5	Q811	I3
Q105	I6	Q812	L3
Q106	I6	Q813	I3
Q107	I6	Q814	L3
Q108	I5	D1	H8
Q110	H5	D2	H9
Q111	H6	D3	H10
Q112	J6	D4	H11
Q113	K11	D5	H11
Q200	K8	J10	M11
Q201	K10	D7	K10
Q202	K11	D9	I2
Q203	K10	D11	I11
Q204	M10	D12	I11
Q205	M11	D13	I10
Q207	M11	D14	N10
Q208	O6	D15	N10
Q209	O7	D16	M11
Ref.NO.	Address	Ref.NO.	Address
D17	M11	D202	K11
D18	N11	D203	L10
D19	N12	D204	K11
D100	I5	D205	K11
D101	J5	D206	L11
D102	I6	D207	L11
D200	K10	D208	L11
D201	K10	D209	L11
Ref.NO.	Address	Ref.NO.	Address
D302	M10	D301	H6
D303	H8	D302	H8
D304	H8	D303	H9
D305	I9	D304	H8
D306	I9	D305	I9
D307	I9	D306	I9
D308	I9	D307	I9
D309	I9	D308	I9
D310	I9	D309	I9
Ref.NO.	Address	Ref.NO.	Address
D401	K5	D400	L8
D500	L7	D501	L8
D502	K8	D503	L8
D503	K8	D504	L8
D504	K8	D505	L8
D505	K8	D506	L8
D506	K8	D507	L8
D507	K8	D508	L8
D508	K8	D509	L8
D509	K8	D510	L8
Ref.NO.	Address	Ref.NO.	Address
D600	E4	D601	E7
D601	F4	D602	E7
D602	E11	D603	E7
D603	I4	D604	E7
D604	I4	D605	E7
D605	I4	D606	E7
D606	I4	D607	E7
D607	I4	D608	E7
D608	I4	D609	E7
D609	I4	D610	E7
Ref.NO.	Address	Ref.NO.	Address
D701	L7	D702	L3
D702	E9	D703	L3
D703	E9	D800	L4
D800	F10	D801	L4
D801	F10	D802	L4
D802	O3	D803	L4
D803	O3	D804	L4
D804	L4	D805	L4
D805	L4	D806	L4
D806	L4	D807	L4
D807	L4	D808	L4
D808	L4	D809	L4
D809	L4	D810	L4

● Connect 1 and 4.

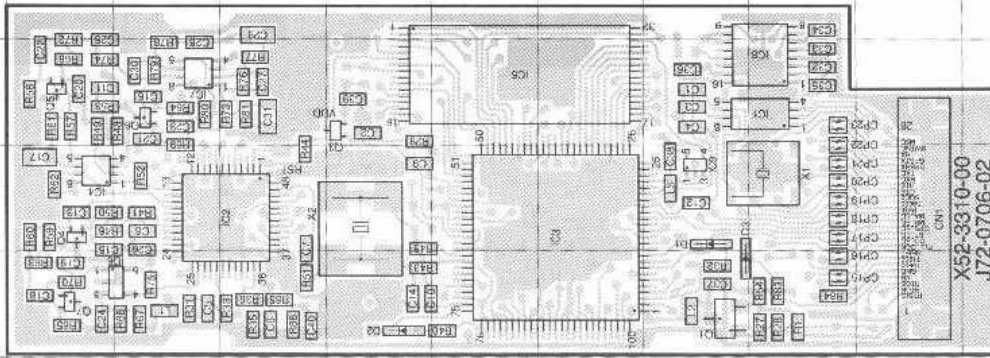
Component side

Foil side



TM-D700A/E PC BOARD VIEWS

TNC UNIT (X52-3310-00)
Component side view



TNC UNIT (Component side)	
Ref No.	Address
IC1	100
IC2	5C
IC3	8C
IC4	3C
IC5	7D
IC6	4B
IC7	4D
IC8	10U
IC9	9C
O1	9B
O3	6D
O4	3C
O6	3D
O6	4D
O7	3B
D1	9C
D2	8B
D3	10B



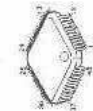
2SA1774



TA75S393F



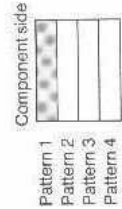
2SA1162
2SC4617



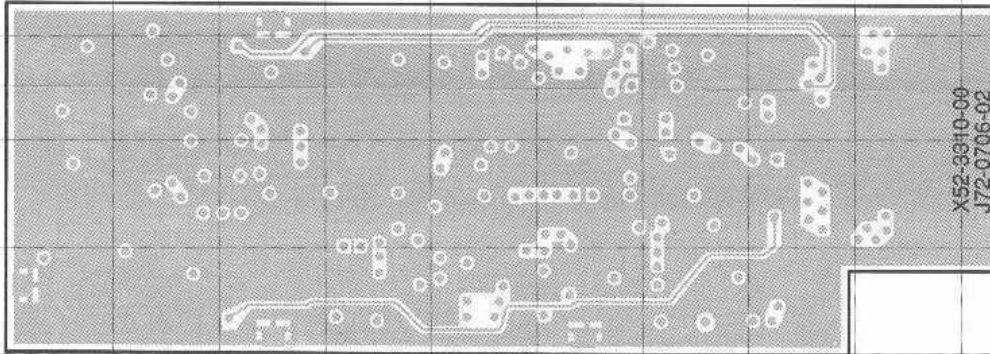
TM102-10Q



KM681000CL17L



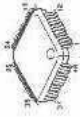
TNC UNIT (X52-3310-00)
Foil side view



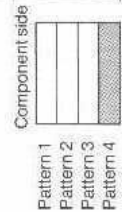
TA75W01FU



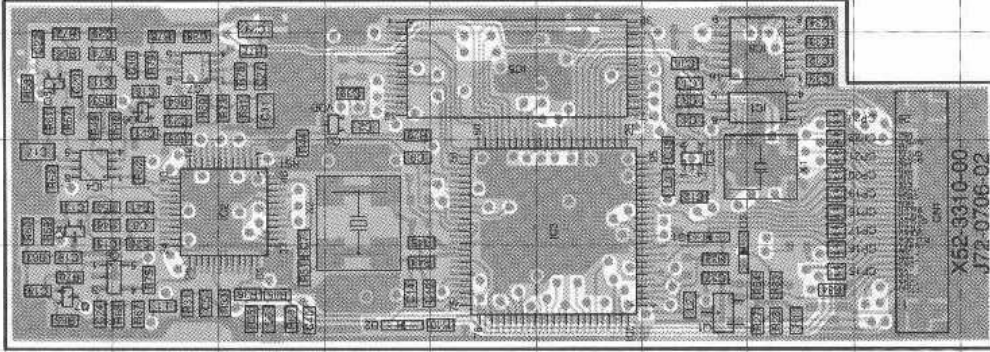
TC75J04FU



TM102-10Q



TNC UNIT (X52-3310-00)
Component side + Foil side view



TNC UNIT (Component side) + (Foil side)	
Ref. NO.	Address
IC1	10P
IC2	5O
IC3	8O
IC4	3O
IC5	7P
IC6	4N
IC7	4P
IC8	10P
IC9	9O
O1	9N
O3	6P
O4	3O
O6	3P
O6	4P
O7	3N
D1	9O
D2	8N
D3	9N



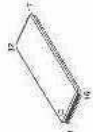
2SA1774



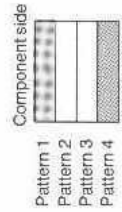
TA75S393F

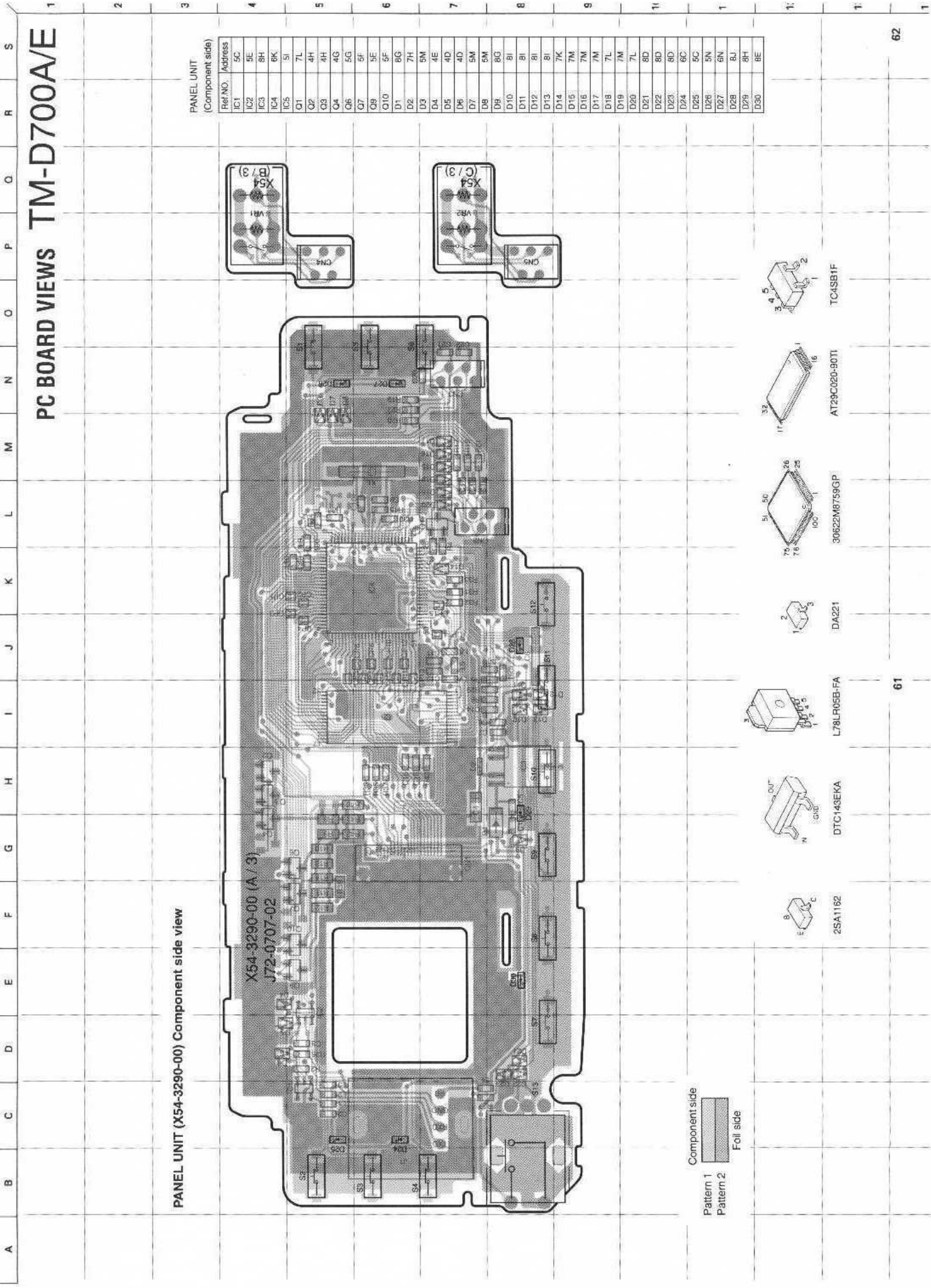


2SA1162
2SC4617



KM681000CL17L





PC BOARD VIEWS TM-D700A/E

PANEL UNIT (X54-3290-00) Component side view

PANEL UNIT (Component side)	
Ref. NO.	Address
IC1	5C
IC2	5E
IC3	8H
IC4	8K
IC5	5I
Q1	7L
Q2	4H
Q3	4H
Q4	4G
O6	5G
O7	6F
O8	5E
O10	5F
D1	6G
D2	7H
D3	5M
D4	4E
D5	4D
D6	4D
D7	5M
D8	5M
D8	8G
D10	8I
D11	8I
D12	8I
D13	8I
D14	7K
D15	7M
D16	7M
D17	7M
D18	7L
D19	7M
D20	7L
D21	8D
D22	8D
D23	8D
D24	6C
D25	5C
D26	5N
D27	6N
D28	8J
D29	8H
D30	8E

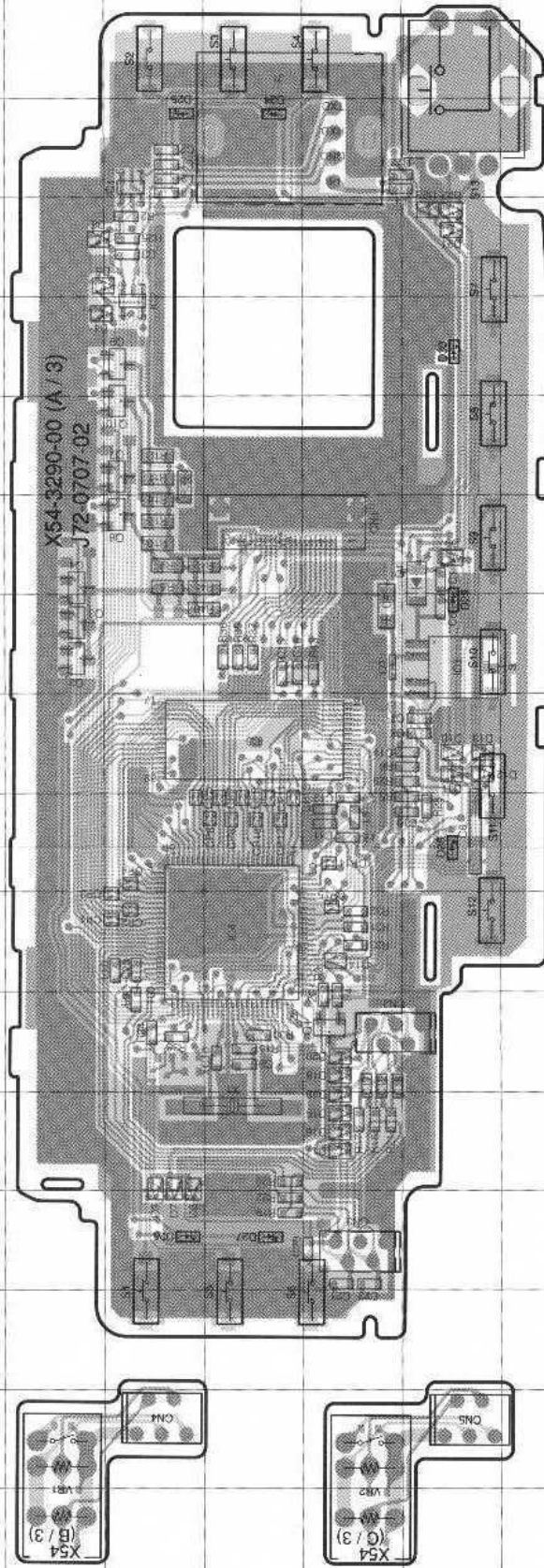
Component side
 Pattern 1
 Pattern 2
 Foil side

- 2SA1162
- DTC143EKA
- L78LR05B-FA
- DA221
- 30622M8759GP
- AT29C020-90TI
- TC45B1F

TM-D700A/E PC BOARD VIEWS

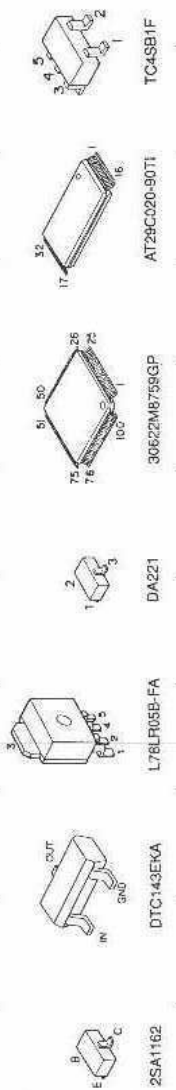
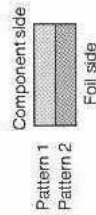
A B C D E F G H I J K L M N O P Q R S

PANEL UNIT (X54-3290-00) Foil side view

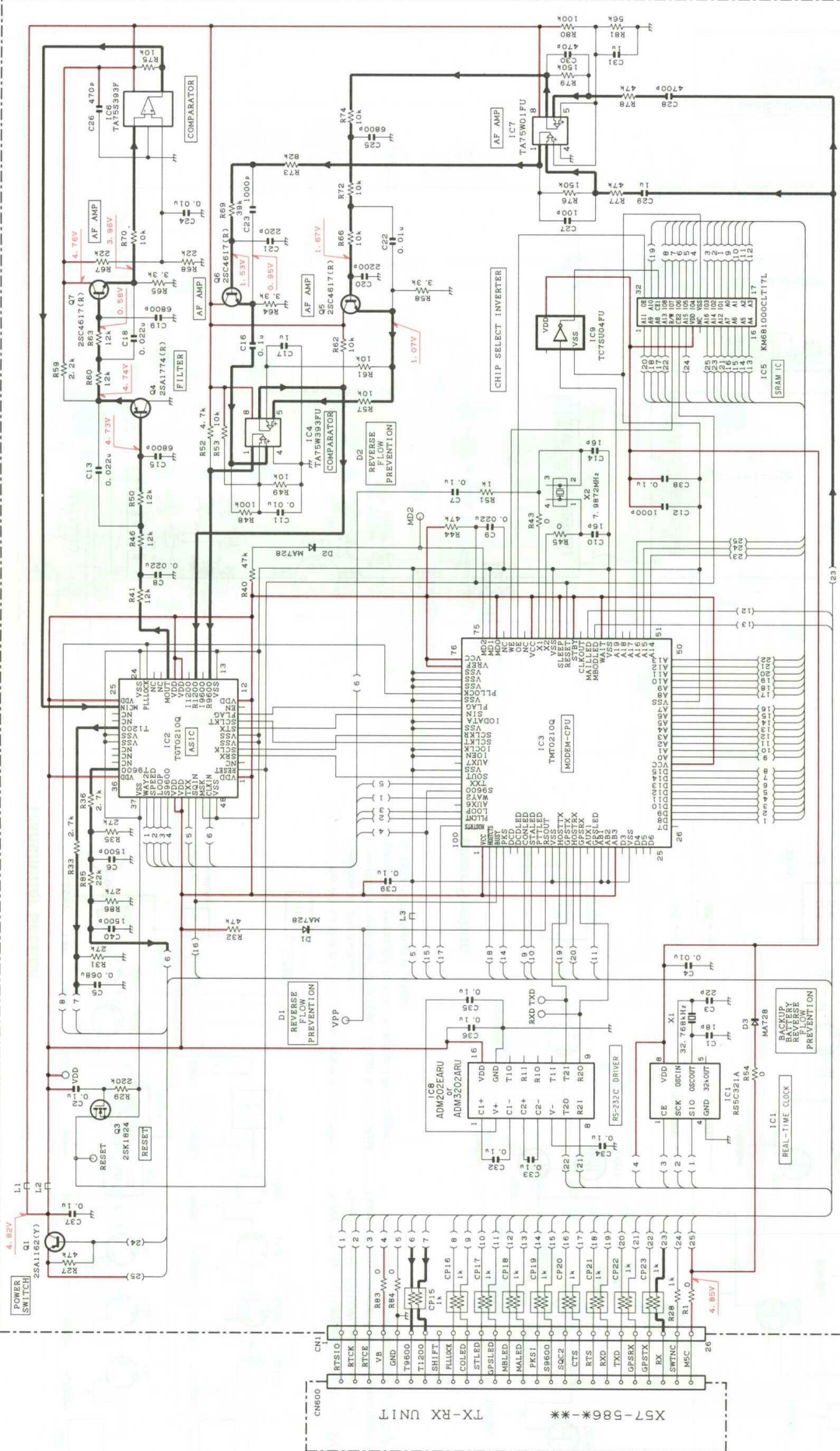


PANEL UNIT (Foil side)

Ref.NO.	Address
IC1	5Q
IC2	5O
IC3	8L
IC4	6I
IC5	6K
O1	7H
O2	4L
O3	4L
O4	4M
O5	5M
O6	7N
O7	5N
O8	5O
O10	5N
D1	8M
D2	7L
D3	5G
D4	4O
D5	4P
D6	4P
D7	5G
D8	5G
D9	8M
D10	8K
D11	8K
D12	8K
D13	8K
D14	7I
D15	7G
D16	7G
D17	7G
D18	7H
D19	7G
D20	7H
D21	8P
D22	8P
D23	8P
D24	6Q
D25	5Q
D26	5F
D27	6F
D28	8I
D29	8L
D30	8O



X52-3310-00 TNC UNIT



- X52-3310-00
- Q1 : 2SA1162(Y)
 Q2 : 4. 6. 7. 9. 10 : DTC143EKA
 Q3 : 2SK1824
 Q4 : 2SA1174(R)
 Q5-7 : 2SC4617(R)
- IC1 : MAX2821A
 IC2 : MAX2821A
 IC3 : MAX2821A
 IC4 : MAX2821A
 IC5 : MAX2821A
 IC6 : MAX2821A
 IC7 : MAX2821A
 IC8 : MAX2821A
 IC9 : MAX2821A
 IC10 : MAX2821A
 IC11 : MAX2821A
 IC12 : MAX2821A
 IC13 : MAX2821A
 IC14 : MAX2821A
 IC15 : MAX2821A
 IC16 : MAX2821A
 IC17 : MAX2821A
 IC18 : MAX2821A
 IC19 : MAX2821A
 IC20 : MAX2821A
 IC21 : MAX2821A
 IC22 : MAX2821A
 IC23 : MAX2821A
 IC24 : MAX2821A
 IC25 : MAX2821A
 IC26 : MAX2821A
 IC27 : MAX2821A
 IC28 : MAX2821A
 IC29 : MAX2821A
 IC30 : MAX2821A
 IC31 : MAX2821A
 IC32 : MAX2821A
 IC33 : MAX2821A
 IC34 : MAX2821A
 IC35 : MAX2821A
 IC36 : MAX2821A
 IC37 : MAX2821A
 IC38 : MAX2821A
 IC39 : MAX2821A
 IC40 : MAX2821A
 IC41 : MAX2821A
 IC42 : MAX2821A
 IC43 : MAX2821A
 IC44 : MAX2821A
 IC45 : MAX2821A
 IC46 : MAX2821A
 IC47 : MAX2821A
 IC48 : MAX2821A
 IC49 : MAX2821A
 IC50 : MAX2821A
 IC51 : MAX2821A
 IC52 : MAX2821A
 IC53 : MAX2821A
 IC54 : MAX2821A
 IC55 : MAX2821A
 IC56 : MAX2821A
 IC57 : MAX2821A
 IC58 : MAX2821A
 IC59 : MAX2821A
 IC60 : MAX2821A
 IC61 : MAX2821A
 IC62 : MAX2821A
 IC63 : MAX2821A
 IC64 : MAX2821A
 IC65 : MAX2821A
 IC66 : MAX2821A
 IC67 : MAX2821A
 IC68 : MAX2821A
 IC69 : MAX2821A
 IC70 : MAX2821A
 IC71 : MAX2821A
 IC72 : MAX2821A
 IC73 : MAX2821A
 IC74 : MAX2821A
 IC75 : MAX2821A
 IC76 : MAX2821A
 IC77 : MAX2821A
 IC78 : MAX2821A
 IC79 : MAX2821A
 IC80 : MAX2821A
 IC81 : MAX2821A
 IC82 : MAX2821A
 IC83 : MAX2821A
 IC84 : MAX2821A
 IC85 : MAX2821A
 IC86 : MAX2821A
 IC87 : MAX2821A
 IC88 : MAX2821A
 IC89 : MAX2821A
 IC90 : MAX2821A
 IC91 : MAX2821A
 IC92 : MAX2821A
 IC93 : MAX2821A
 IC94 : MAX2821A
 IC95 : MAX2821A
 IC96 : MAX2821A
 IC97 : MAX2821A
 IC98 : MAX2821A
 IC99 : MAX2821A
 IC100 : MAX2821A

X57-580 * * *

TX-RX UNIT

CHNGO

26

17

16

15

14

13

12

11

10

9

8

7

6

5

4

3

2

1

0

-1

-2

-3

-4

-5

-6

-7

-8

-9

-10

-11

-12

-13

-14

-15

-16

-17

-18

-19

-20

-21

-22

-23

-24

-25

-26

-27

-28

-29

-30

-31

-32

-33

-34

-35

-36

-37

-38

-39

-40

-41

-42

-43

-44

-45

-46

-47

-48

-49

-50

-51

-52

-53

-54

-55

-56

-57

-58

-59

-60

-61

-62

-63

-64

-65

-66

-67

-68

-69

-70

-71

-72

-73

-74

-75

-76

-77

-78

-79

-80

-81

-82

-83

-84

-85

-86

-87

-88

-89

-90

-91

-92

-93

-94

-95

-96

-97

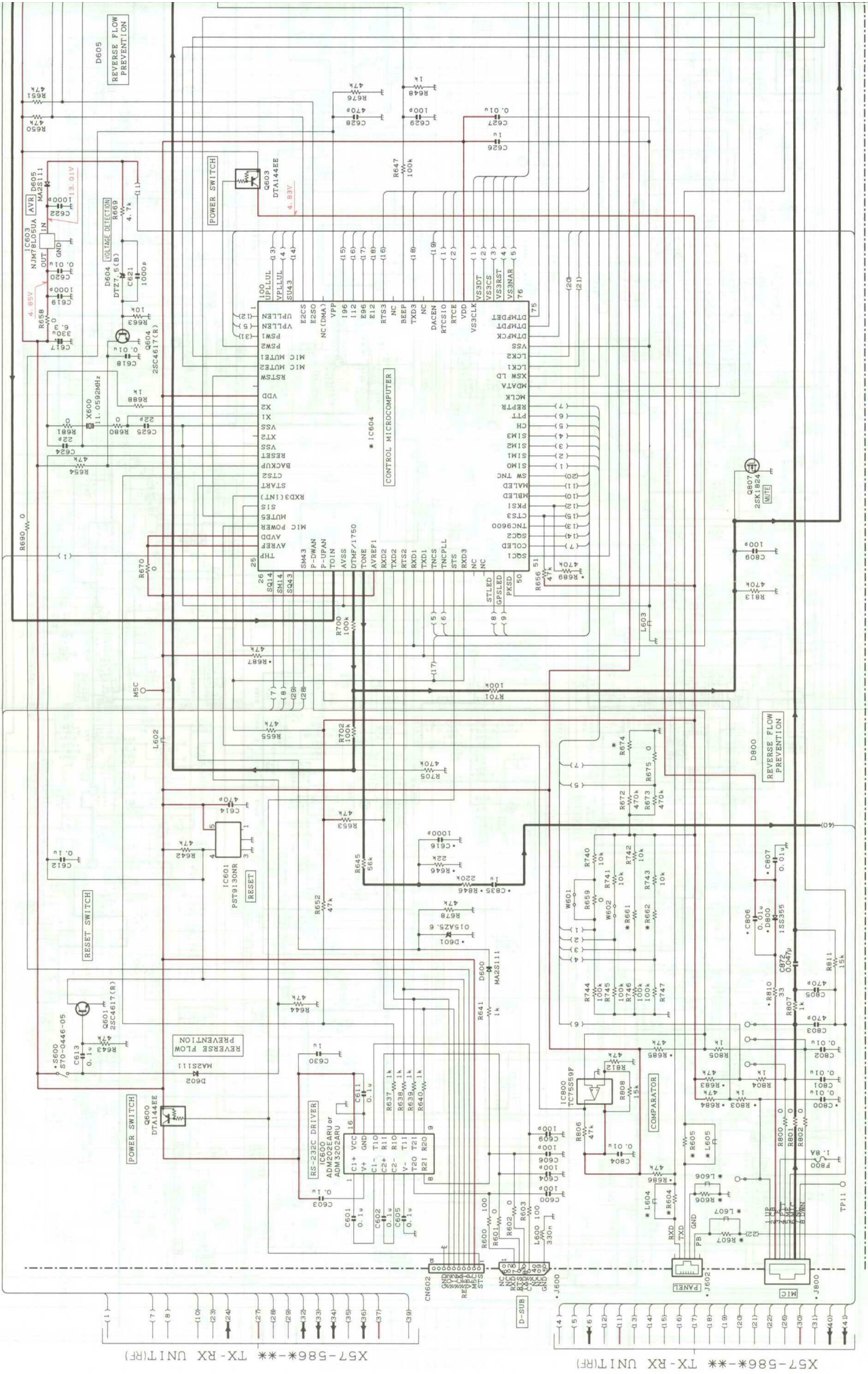
-98

-99

-100

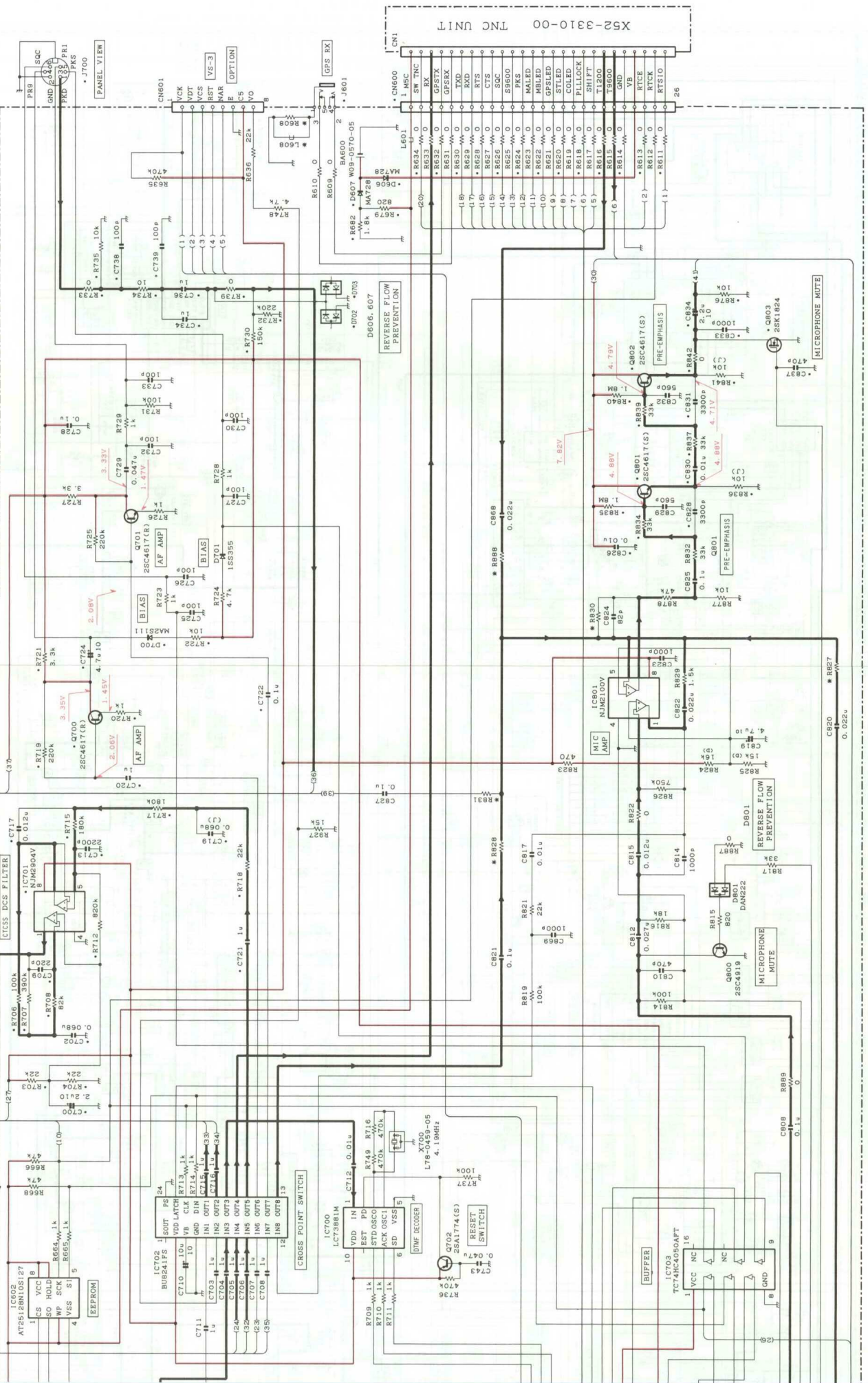
TM-D700A/E SCHEMATIC DIAGRAM

X57-586** TX-RX UNIT (CONTROL) D600: 602, 605, 700, MA2S111
 D701: 800, ISS365, D702, 703, DA321, IC600: ADM202EARI/ADM202ARU
 IC601: PST9130NR, D606, 607, N72Z, D609: 1002, D604: DTZ7.5(B),
 IC602: AT25128N1GS127, IC603: N1MT810S09A, IC604: T8F42186C1V7C (0-11)
 D605: REVERSE FLOW PREVENTION
 IC605: STP5130NR, IC606: 1002, IC607: 153355, IC608: 28K1824

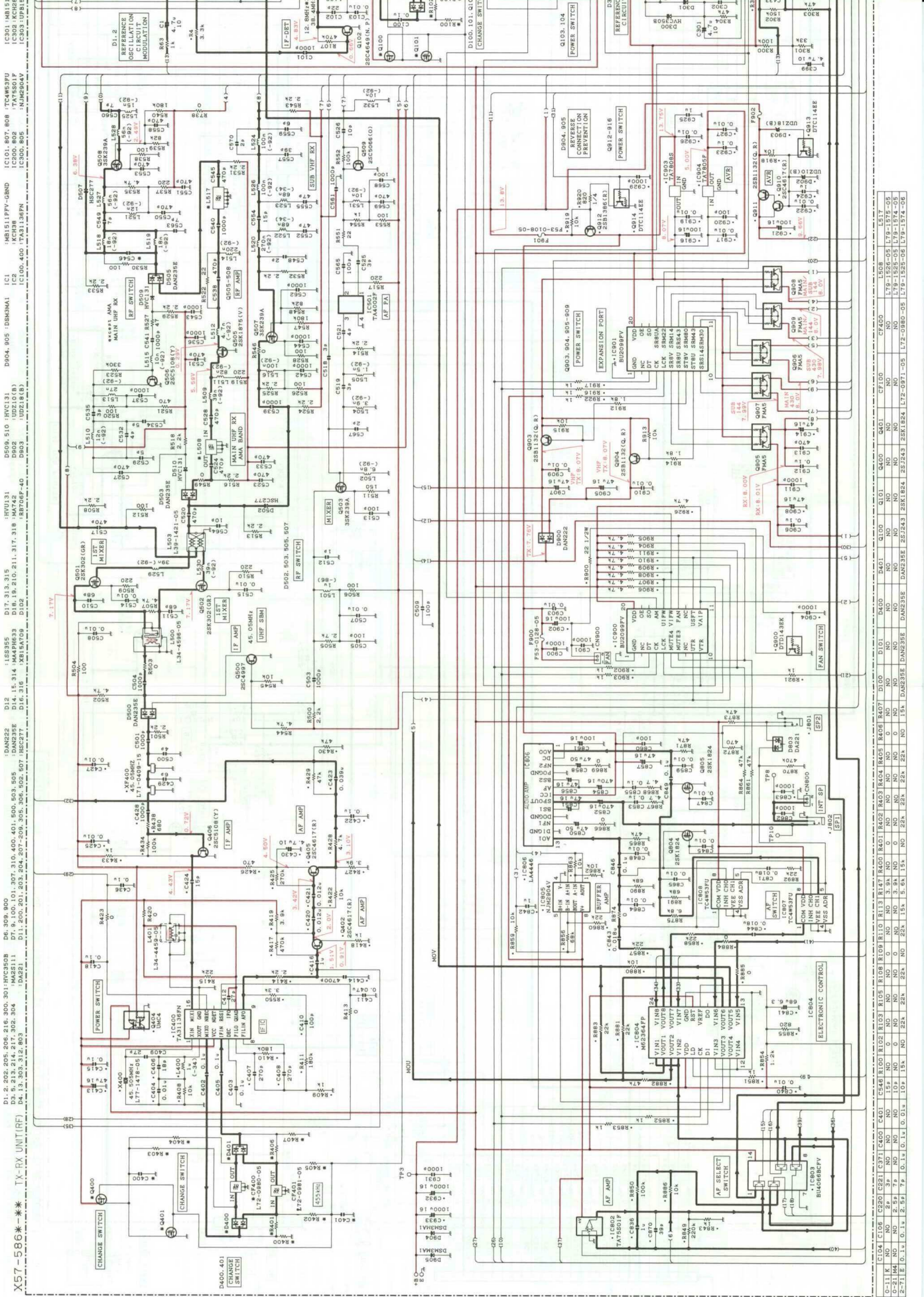


X57-586** TX-RX UNIT (CONTROL) X57-586** TX-RX UNIT (RF)

LC73881M	IC702 : TC75559F	IC800 : TC74HC4050AFT	IC600 : 603 : DTA144EE	Q801, 802 : 2SC4617(S)	RB661	RB662	RB663	RB664	RB665	RB666	RB667	RB668	RB669	RB670	RB671	RB672	RB673	RB674
NJM2904V	IC703 : TC74HC4050AFT	IC801 : NJM2100V	Q800 : 2SC4919	Q803, 807 : 2SK1824	RB675	RB676	RB677	RB678	RB679	RB680	RB681	RB682	RB683	RB684	RB685	RB686	RB687	RB688
			Q804, 808 : 2SC4617(S)	Q805, 809 : 2SK1824	RB689	RB690	RB691	RB692	RB693	RB694	RB695	RB696	RB697	RB698	RB699	RB700	RB701	RB702
					RB703	RB704	RB705	RB706	RB707	RB708	RB709	RB710	RB711	RB712	RB713	RB714	RB715	RB716



Note : Component marked with a dot (•) are parts of pattern1.



X57-586**
D1.2 202, 206, 208, 216, 300, 301, HVC3509
D4.1 303, 312, 803
D4.2 304
D4.3 305, 312, 803
D4.4 201, 203, 204, 207, 208, 306, 502, 807, HEC277
D4.5 311, HASE211
D6.309 800
D6.310 307, 310, 400, 401, 500, 503, 508
D6.311 304
D7.312 315
D7.313 316
D7.314 317, 318
D7.315 319, 320, 311, 317, 318
D9.04 805, DBN041
D9.05 510, RV131
D9.06 511
D9.07 512
D9.08 513
D9.09 514
D9.10 515
D9.11 516
D9.12 517
D9.13 518
D9.14 519
D9.15 520
D9.16 521
D9.17 522
D9.18 523
D9.19 524
D9.20 525
D9.21 526
D9.22 527
D9.23 528
D9.24 529
D9.25 530
D9.26 531
D9.27 532
D9.28 533
D9.29 534
D9.30 535
D9.31 536
D9.32 537
D9.33 538
D9.34 539
D9.35 540
D9.36 541
D9.37 542
D9.38 543
D9.39 544
D9.40 545
D9.41 546
D9.42 547
D9.43 548
D9.44 549
D9.45 550
D9.46 551
D9.47 552
D9.48 553
D9.49 554
D9.50 555
D9.51 556
D9.52 557
D9.53 558
D9.54 559
D9.55 560
D9.56 561
D9.57 562
D9.58 563
D9.59 564
D9.60 565
D9.61 566
D9.62 567
D9.63 568
D9.64 569
D9.65 570
D9.66 571
D9.67 572
D9.68 573
D9.69 574
D9.70 575
D9.71 576
D9.72 577
D9.73 578
D9.74 579
D9.75 580
D9.76 581
D9.77 582
D9.78 583
D9.79 584
D9.80 585
D9.81 586
D9.82 587
D9.83 588
D9.84 589
D9.85 590
D9.86 591
D9.87 592
D9.88 593
D9.89 594
D9.90 595
D9.91 596
D9.92 597
D9.93 598
D9.94 599
D9.95 600
D9.96 601
D9.97 602
D9.98 603
D9.99 604
D1000 605

Part No.	Description	Quantity
IC001	MB151PFF-GBND	1
IC002	IC100.400	1
IC003	IC300.805	1
IC004	IC100.400	1
IC005	IC300.805	1
IC006	IC201	1
IC007	IC202	1
IC008	IC203	1
IC009	IC204	1
IC010	IC205	1
IC011	IC206	1
IC012	IC207	1
IC013	IC208	1
IC014	IC209	1
IC015	IC210	1
IC016	IC211	1
IC017	IC212	1
IC018	IC213	1
IC019	IC214	1
IC020	IC215	1
IC021	IC216	1
IC022	IC217	1
IC023	IC218	1
IC024	IC219	1
IC025	IC220	1
IC026	IC221	1
IC027	IC222	1
IC028	IC223	1
IC029	IC224	1
IC030	IC225	1
IC031	IC226	1
IC032	IC227	1
IC033	IC228	1
IC034	IC229	1
IC035	IC230	1
IC036	IC231	1
IC037	IC232	1
IC038	IC233	1
IC039	IC234	1
IC040	IC235	1
IC041	IC236	1
IC042	IC237	1
IC043	IC238	1
IC044	IC239	1
IC045	IC240	1
IC046	IC241	1
IC047	IC242	1
IC048	IC243	1
IC049	IC244	1
IC050	IC245	1
IC051	IC246	1
IC052	IC247	1
IC053	IC248	1
IC054	IC249	1
IC055	IC250	1
IC056	IC251	1
IC057	IC252	1
IC058	IC253	1
IC059	IC254	1
IC060	IC255	1
IC061	IC256	1
IC062	IC257	1
IC063	IC258	1
IC064	IC259	1
IC065	IC260	1
IC066	IC261	1
IC067	IC262	1
IC068	IC263	1
IC069	IC264	1
IC070	IC265	1
IC071	IC266	1
IC072	IC267	1
IC073	IC268	1
IC074	IC269	1
IC075	IC270	1
IC076	IC271	1
IC077	IC272	1
IC078	IC273	1
IC079	IC274	1
IC080	IC275	1
IC081	IC276	1
IC082	IC277	1
IC083	IC278	1
IC084	IC279	1
IC085	IC280	1
IC086	IC281	1
IC087	IC282	1
IC088	IC283	1
IC089	IC284	1
IC090	IC285	1
IC091	IC286	1
IC092	IC287	1
IC093	IC288	1
IC094	IC289	1
IC095	IC290	1
IC096	IC291	1
IC097	IC292	1
IC098	IC293	1
IC099	IC294	1
IC100	IC295	1

